



2D &amp; 3D DIGITAL RADAR

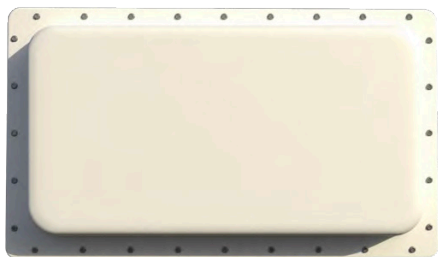
WATCH  
WISELY

## GROUNDWARE® GA4120

### MID-RANGE 120° - 360° 2D RADAR SYSTEM

O.W.L. GroundAware GA4120 2D digital multibeamforming radar system combines advanced digital beamforming radar technology, classification intelligence, reconfigurability, and easy integration with other security systems to bring real-time, all-weather situational awareness for the physical security of perimeters and other sensitive areas of critical sites.

As the foundation for event-based layered security, GA4120 enables automated detection, tracking, deterrence, and response to intrusions within 4 km and 120° field of view (per panel) of critical sites – up to 2,000 acres with a single radar.



### FEATURES

- Digital beamforming radar technology for highly reliable all-weather detection and tracking of all target types
- Seamless integration with cameras, VMS, access control, audible alarms, security lights, drones, and more
- Target classification to distinguish among humans, animals, and vehicles for alarming on targets of concern, avoiding nuisances
- Customizable alarm zones with automatic response triggers
- Wide-area coverage requires fewer sensors and less infrastructure for lower total surveillance costs
- Solid state system with no moving parts
- Backed by full warranty

### APPLICATIONS

GA4120 is the ideal solution for midsized critical sites or areas of larger sites where focused surveillance is required. Real-world applications include:



Airports



Natural gas facilities



Renewable energy sites



Oil and gas sites



Electrical transmission substations



Logistics facilities



Water reservoirs



Correctional facilities



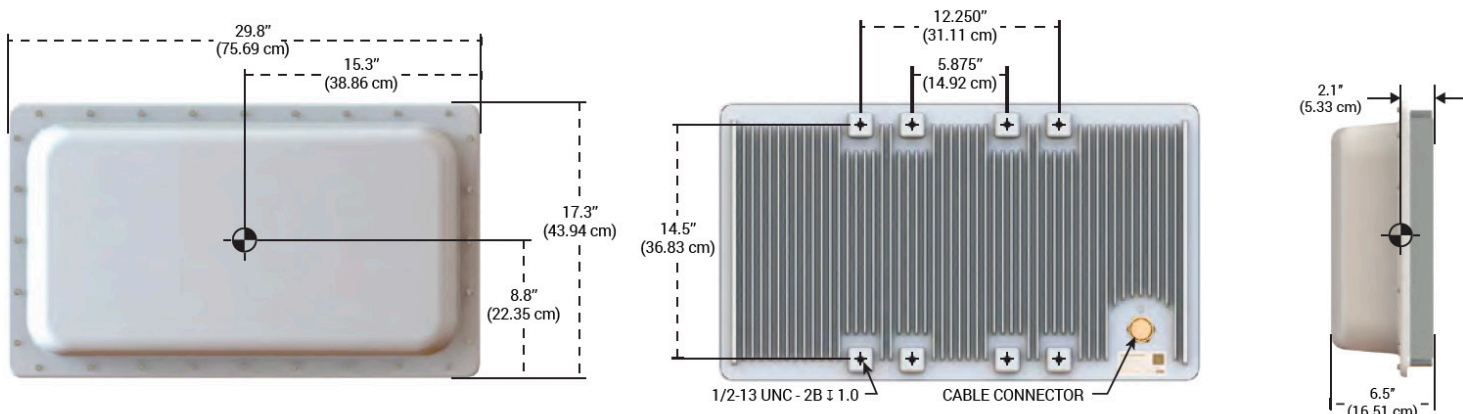
Treatment plants



Campuses

GA4120 can be mounted on the side of poles, buildings, or mobile platforms.

# GROUND AWARE® GA4120



## TECH SPECS

<b>Architecture:</b>	Simultaneous multiple beams	<b>Software Defined Update Rate:</b>	1 Hz - 5 Hz
<b>Processing Type:</b>	Pulsed Doppler	<b>Minimum Detectable Velocity:</b>	0.25-1 mph
<b>Frequency Band:</b>	S (3.0 to 3.3 GHz)	<b>Weight:</b>	25.4 kg 56 lbs.
<b>Range Resolution:</b>	5 or 10 m (adjustable)	<b>Dimensions:</b>	76.2 cm x 43.2 cm x 17.2 cm 30" x 17" x 7"
<b>Selectable Frequency Bands:</b>	6 calibrated	<b>Power Draw:</b>	75W
<b>Instrumented Range:</b>	5 km Detection Ranges* Vehicle: 4 km Walker: 3 km	<b>Operating Temperature:</b>	-20°C to +60°C -4°F to +140°F
<b>Azimuth FOV:</b>	120°	<b>Component Temperature:</b>	-40°C to +85°C -40°F to +185°F
<b>Elevation FOV:</b>	20°	<b>Heating/Cooling:</b>	Passive

\* Achieving maximum detection ranges requires sufficient mounting height and line of sight, especially for ground targets.

**Observation Without Limits (O.W.L.)**, a Dynetics business, leverages 49 years of radar expertise to develop, manufacture, and support the O.W.L. GroundAware® family of 2D and 3D digital beamforming radar solutions. Critical infrastructure and government sectors around the world use O.W.L. solutions for ground, water surface, and low-altitude airspace surveillance as the foundation for their event-based layered security plans.

[www.owlknows.com](http://www.owlknows.com) | +1 888-297-9559 | +1 (256) 713-5021

**O W L**  
2D & 3D DIGITAL RADAR  
**WATCH WISELY**